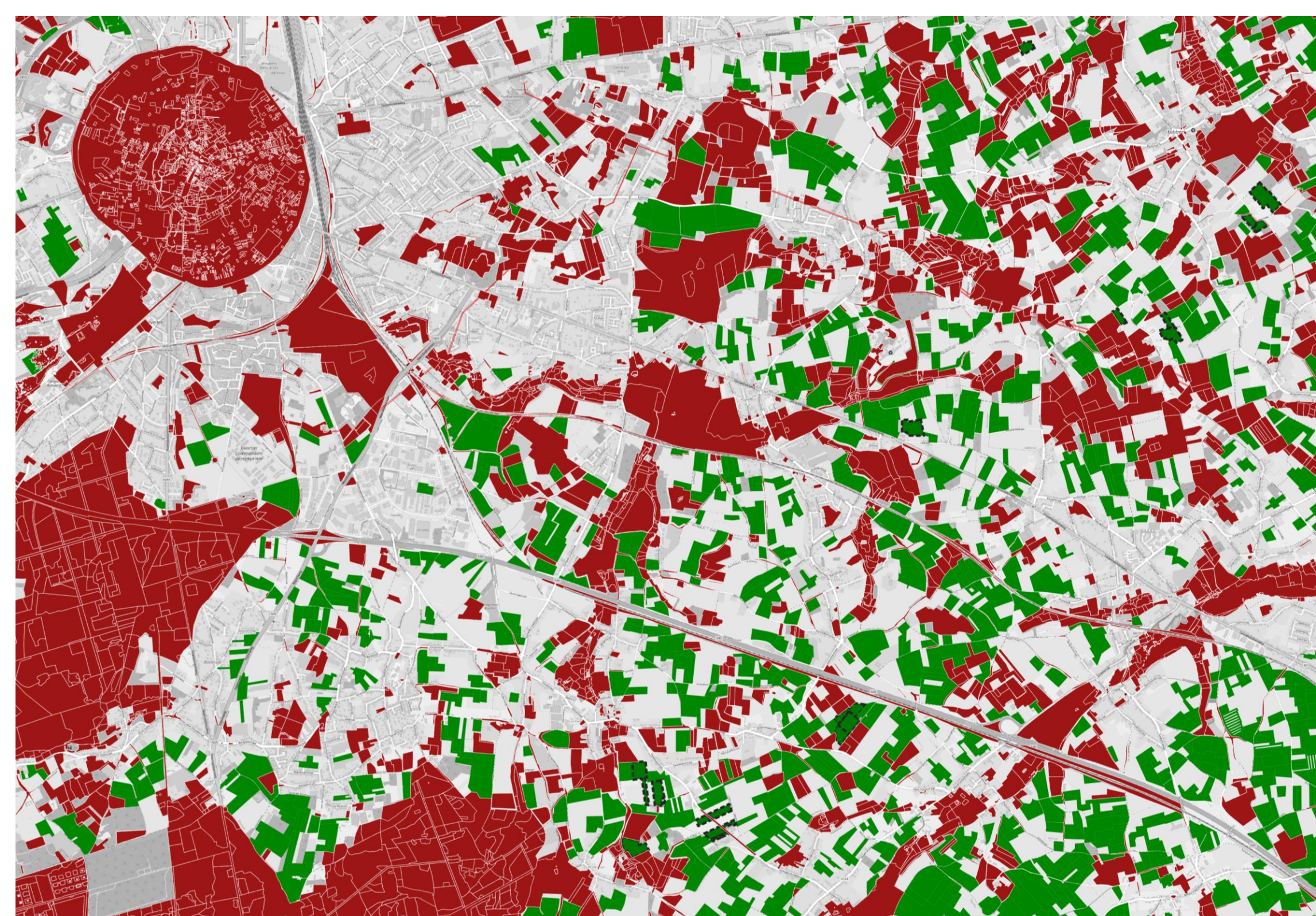
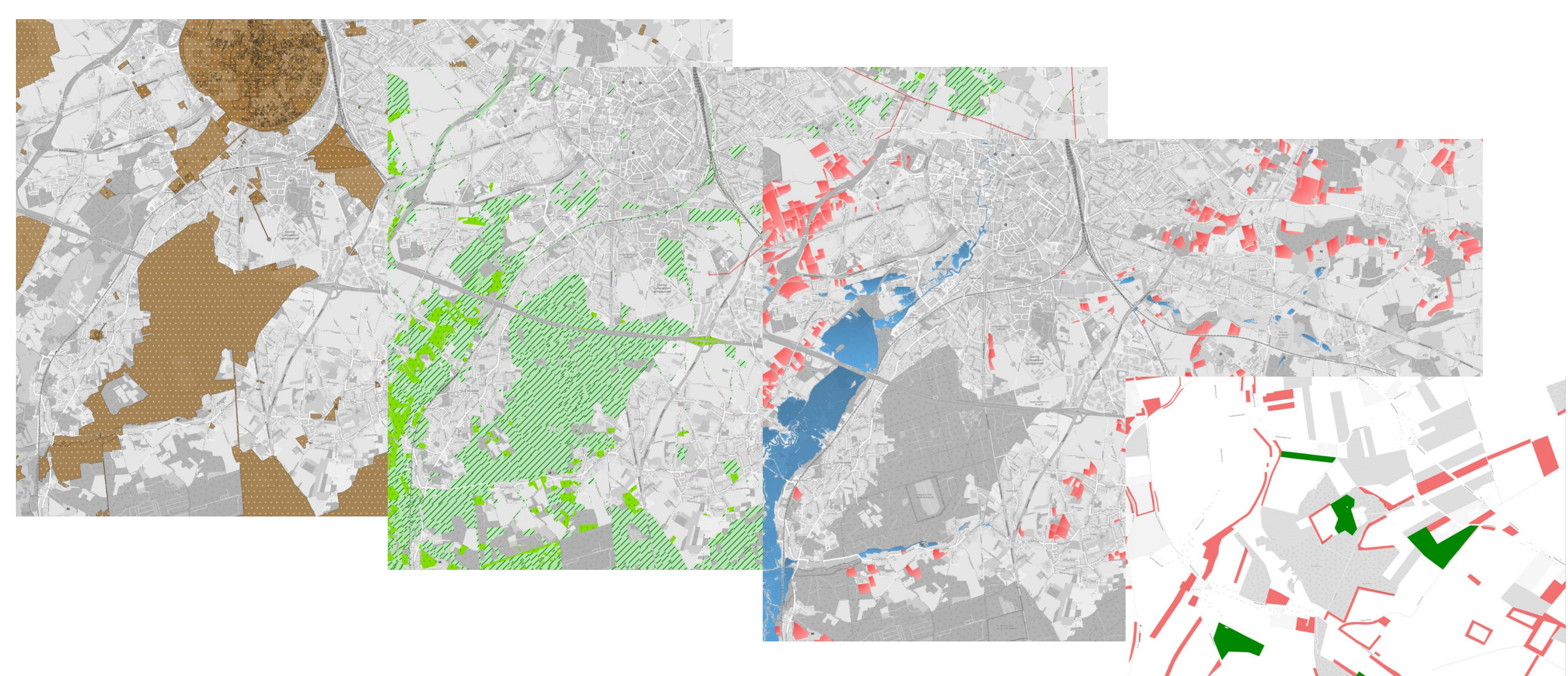
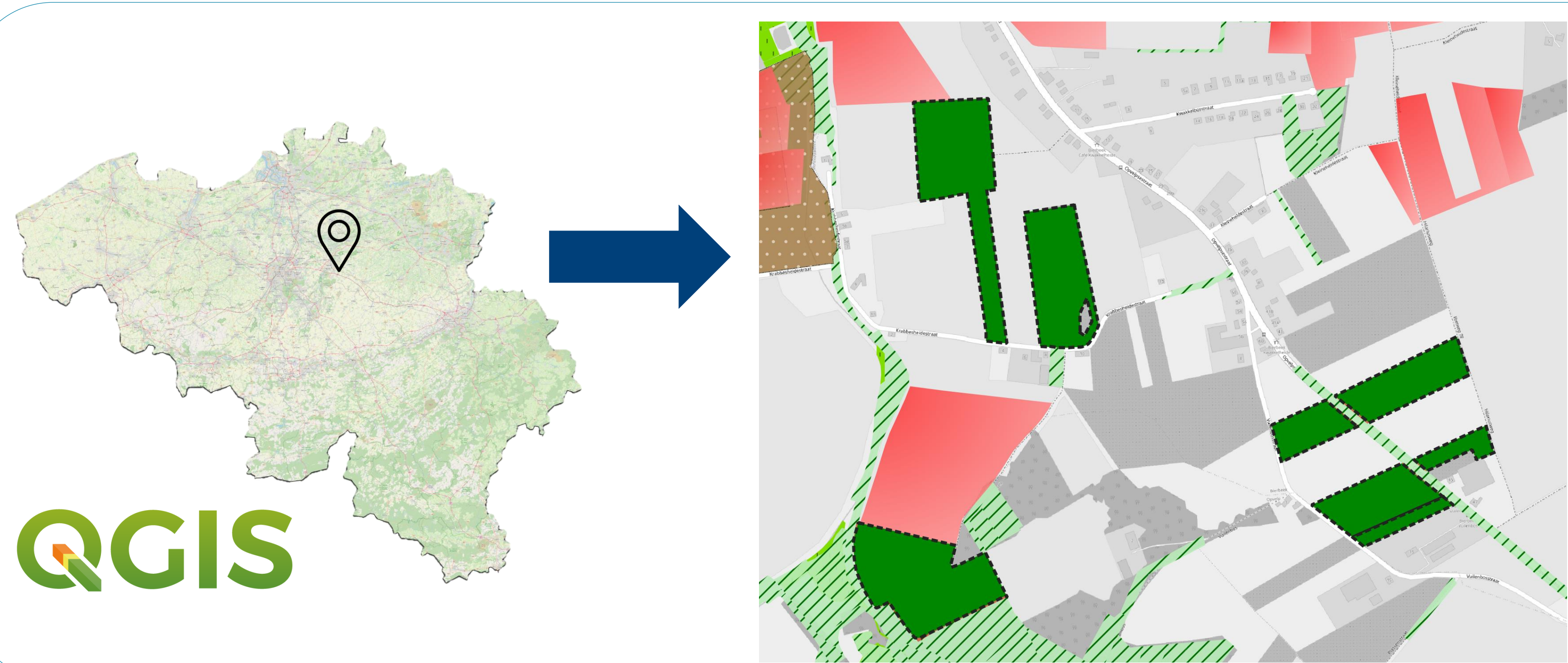


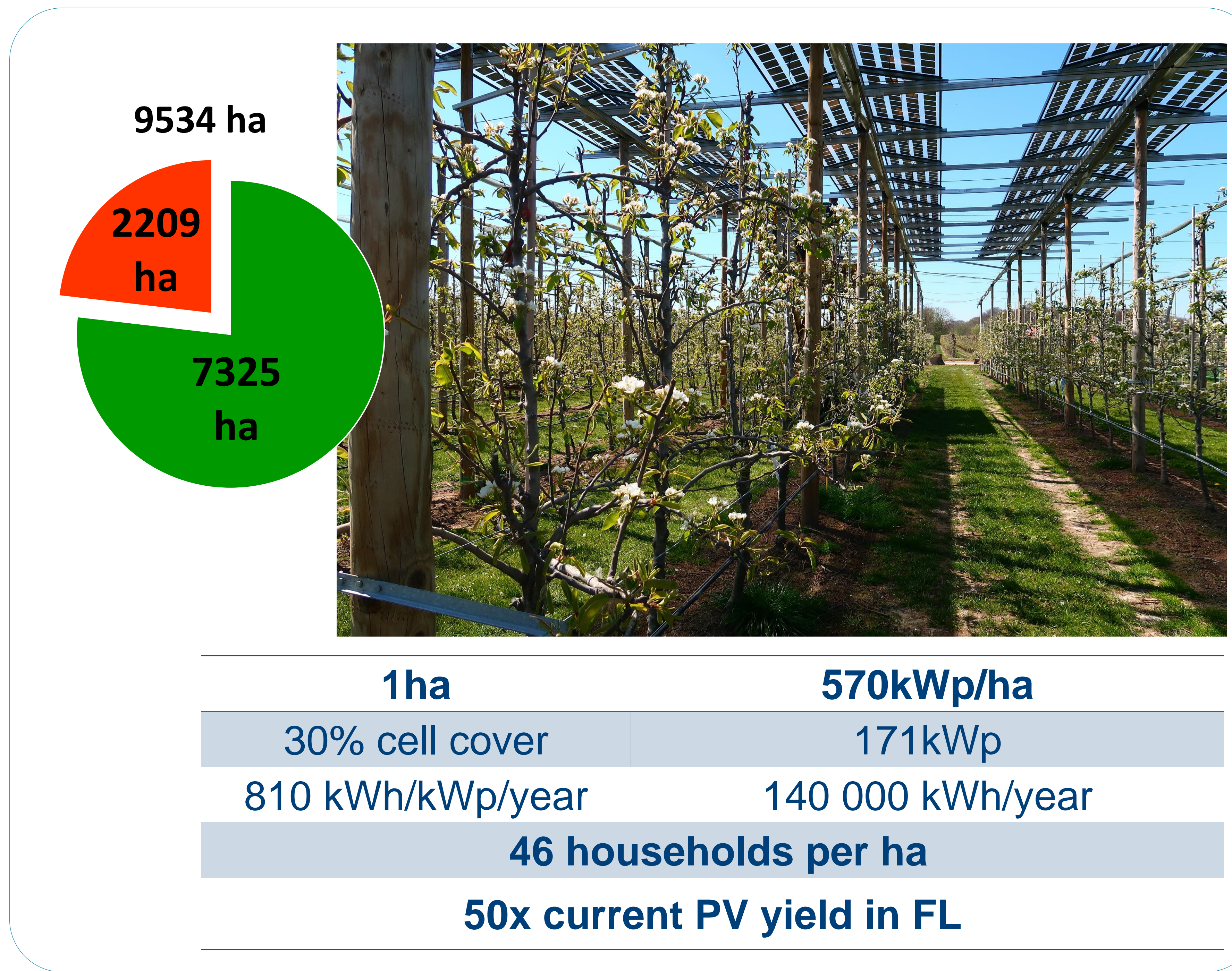
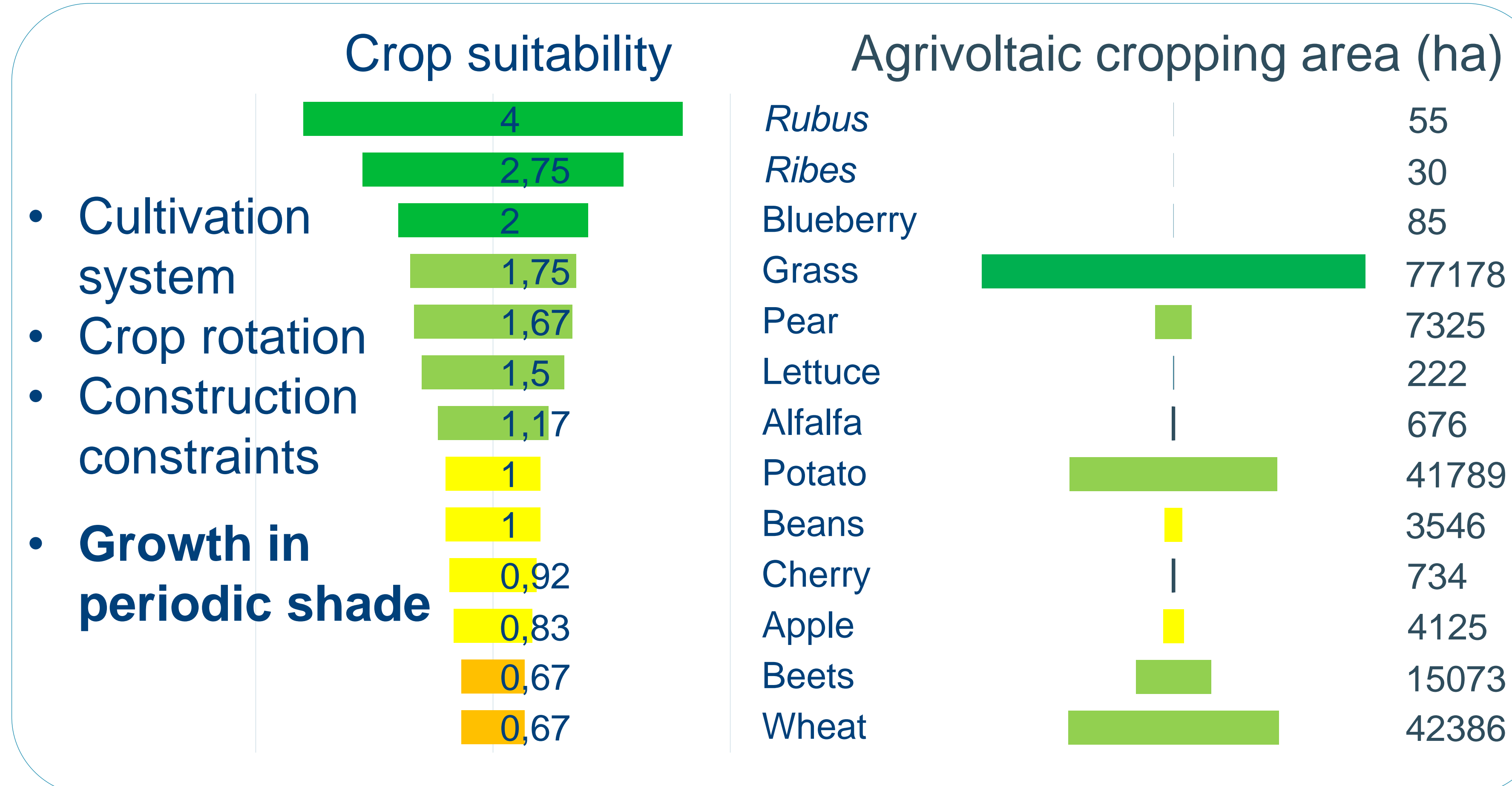
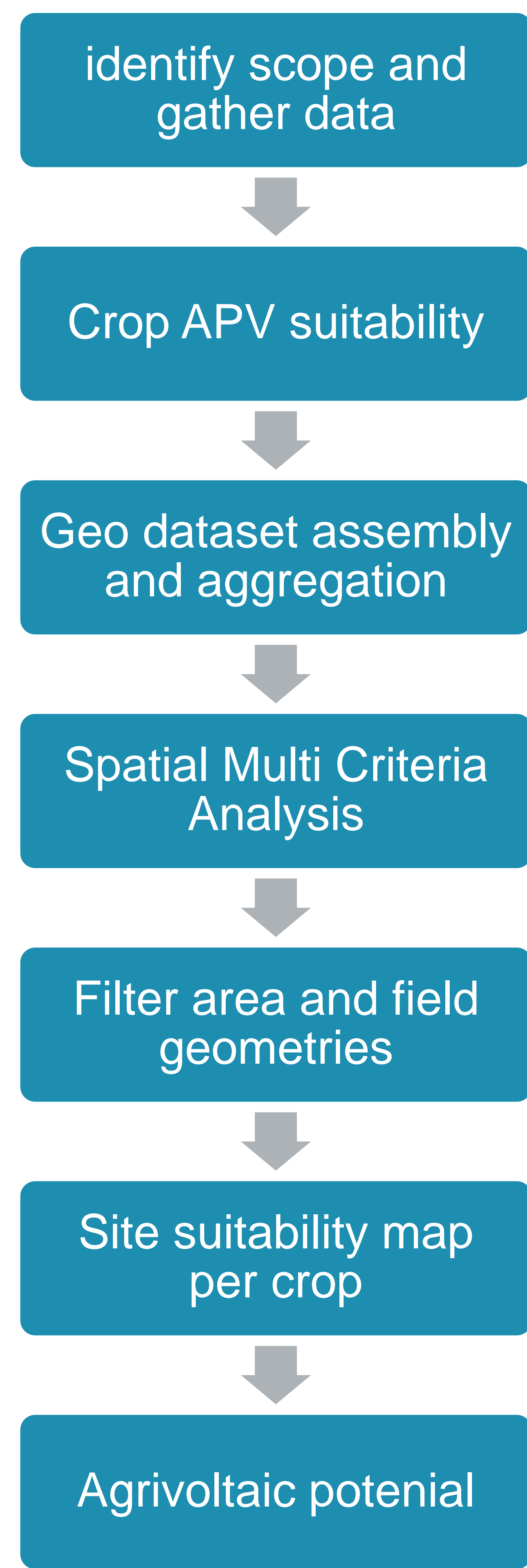


Suitable Sites for Agrivoltaics : Performance of a Pear Orchard

Thomas Reher¹, Brecht Willockx², Jan Cappelle², Jan Diels³, Bram Van de Poel¹



- Selected crops
- Patrimony
- Environment
- Old grassland
- Erosion risk
- Flooding risk



1: Molecular Plant Hormone Physiology Laboratory, Department of Biosystems, University of Leuven. 3001 Leuven, Belgium
2: E&A (Energy and Automation) Research Group, Faculty of Engineering Technology, University of Leuven, 9000 Ghent, Belgium
3: Dept. Earth and Environmental Sciences, Division of Soil and Water Management, University of Leuven, 3001 Leuven, Belgium